



**Board of
Elections**

Operations Update

**Tom Connolly & Brendan Lovullo
State Board of Elections**

September 26, 2022

Early Voting Changes

Early Voting Changes

➤ Number of Sites

- For counties with 500,000 or more registered voters, you must designate one early voting location for each full increment of 40,000 voters (*no cap*).
- For counties under 500,000 registered voters, you must designate one early voting location for each full increment of 30,000 voters (*cap of 10*).

➤ Location of Sites

- Must locate an early voting site in the largest city in the county or, if there is no city in the county, the municipality with the highest population.
- For any special, primary or run-off primary election, when no voters of the highest population municipality are eligible to vote, the board of elections may instead designate a polling place for early voting in the municipality with the highest population within the county within which the voters are eligible to vote at such election.

Early Voting Changes

➤ Additional Hours of Early Voting

- Polls shall be open for early voting for at least **eight** hours between nine o'clock in the morning and **eight** o'clock in the evening on each Saturday, Sunday and legal holiday during the early voting period (*previously five hours and six o'clock*).

Ballot Design

Ballot Design

➤ General Reminders

- Use only Sans Serif fonts
- Text shall be printed flush left
- All text shall be printed using standard capitalization, do not use all caps anywhere on the ballot
- If used, shading is to be used consistently

➤ Multiple Languages

- All ballots are to contain English and no more than two additional languages
- No Spanish-Only ballots

Ballot Design

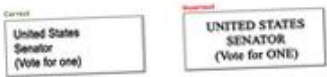
Summary of Voter Friendly Ballot Act Changes

Changes to how ballots need to be designed became effective on July 1st of this year. Below is a summary of some of the more significant changes made to the new law. We have also included a summary showing each certified county's ability to comply with each of the new requirements, and the language of the law itself. Please review the information [available](https://www.elections.ny.gov) on the Election Operations Unit web site, questions about the implementation of any of the provisions described by emailing election_operations@doe.ny.gov or calling us at 518-475-3388.

Global Changes to Text Formatting

- Use only sans serif fonts
- All text shall be printed flush left
- All text shall be printed using standard capitalization


Current **Required**



Changes to the Party Column

- Remove flag and emblem


Current **Required**



Changes to the Candidate Square

- Voting oval or square to appear to the left of the candidate name
- Remove emblem from candidate box
- Party name printed in smaller font than candidate name
- Remove designating letter from candidate box
- (Optional) Remove designating number


Current **Required**




Changes for Instructions

- See end of document for revised instructional text
- Instructions to appear in line heights no wider than 8 inches

Current **Required**



- When questions appear on the back of the ballot, on the front of the sheet appear a clear symbol indicating that the voter should turn over the ballot

Remember to vote both sides 

Changes for Propositions

- Voting positions for 'Yes' and 'No' may appear above, below or to the left of each text

Additional Changes to the Ballot

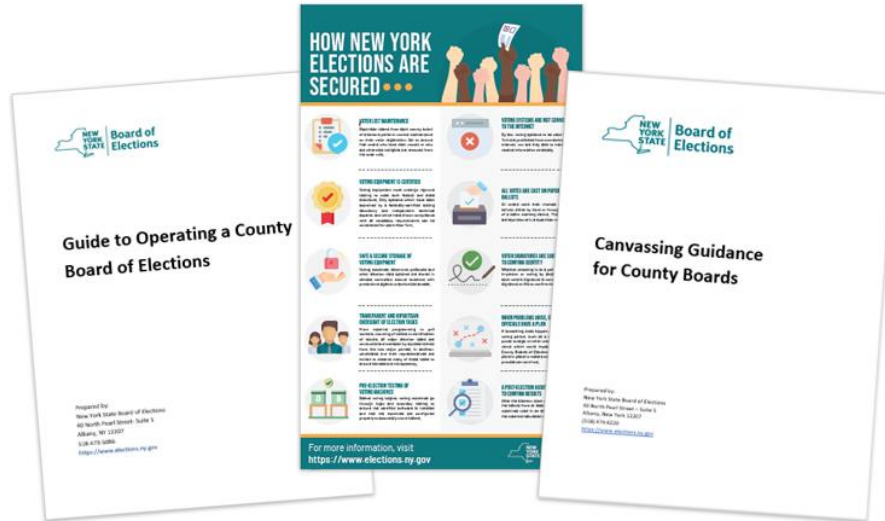
- If used, shading to be used consistently
- For counties required to provide ballots in additional languages, ballots shall be printed in English and no more than 2 alternate languages

To the extent practicable, the ballot shall also comply with the following specifications:

- If a security threat determines no instructions are to be printed on the ballot, in the **UPPER LEFT** corner of the ballot shall be an illustration of a **contaminated** oval and the words "See the instructions on the other side" or "See instructions (front where instructions may be found)"
- Instructions shall appear in the upper left corner of the ballot
- Candidate names shall be printed using a font size of not less than points

Guides, Resources, Trainings & Visits

Guides, Resources, Trainings & Visits



- Updating existing and creating guides and resources for counties to use
 - Guide to Running a Board of Elections
 - Early Voting Guide
 - Canvassing Guide
 - Election Security Infographic
 - More to come!

Guides, Resources, Trainings & Visits

- **Multiple Units at the State Board Have Need to Visit CBOEs**
 - Operations
 - PIO/NVRA
 - Secure Elections
- **Working to consolidate, streamline and cross-train staff to allow for each visit to serve multiple purposes where possible.**
- **Also working on a similar process for information requests**

Electronic Poll Book Update

Electronic Poll Book Update

- **March 11th – Deadline for submission of new configurations**
 - Expecting a submission from all three approved vendors.
 - Expect to have testing complete and any approvals finalized no later than 45 days before the June Primary.

- **Reminder about new workflow for absentee voters**
 - Information must be exported out of your voter registration systems so that it is indicated when a voter has been issued an absentee ballot.
 - Any such voter showing up at the poll site will no longer be allowed to vote on a machine. Instead, they will only have the ability to vote by affidavit ballot (no court order option).

Voting Systems Update

Voting Systems Update

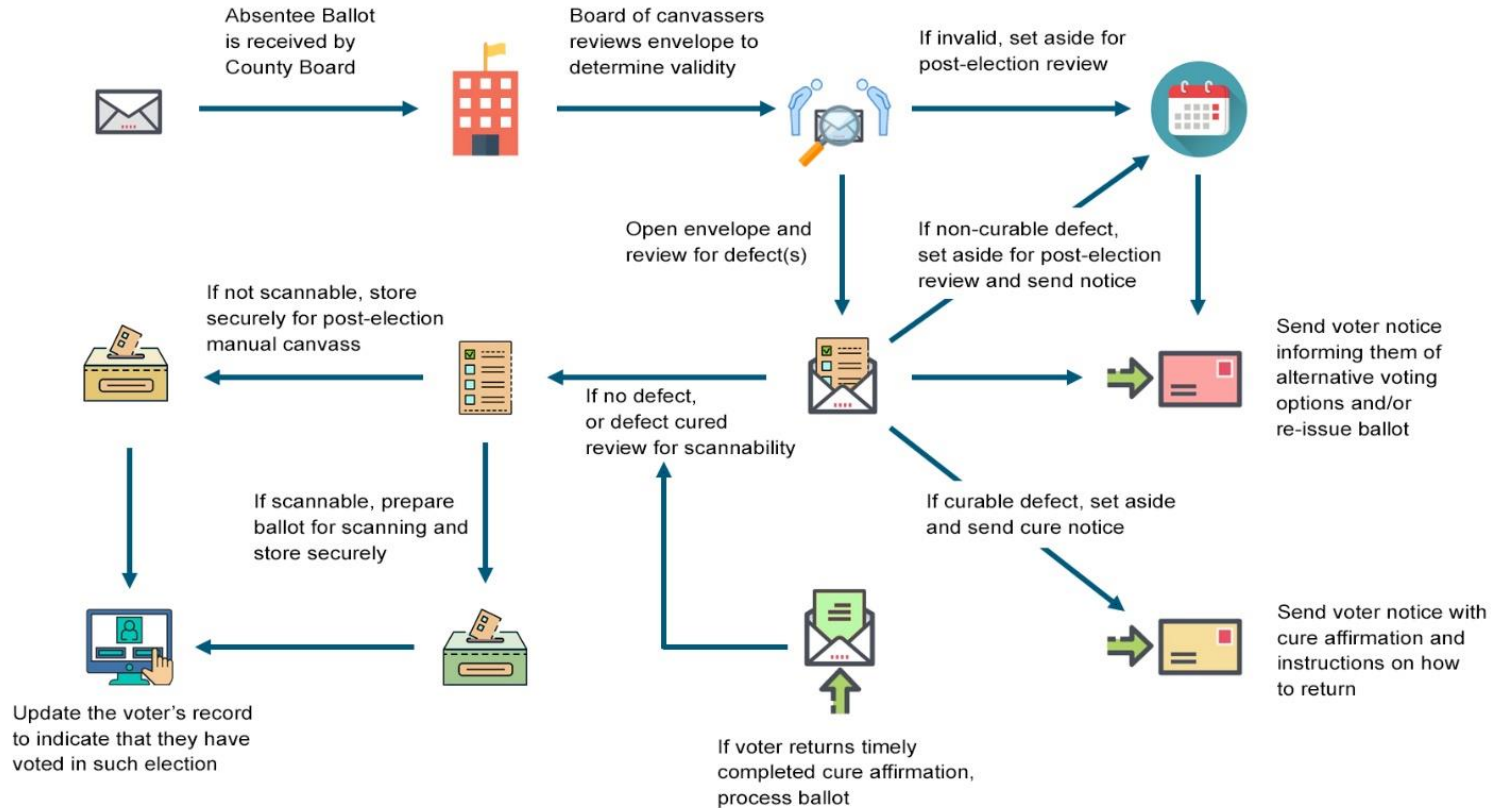
- **There are a lot of systems being submitted for certification!**
 - Dominion
 - Hart
 - Clear Ballot
 - Modification
 - Full System
 - ES&S
 - Democracy Live

Early Canvass

Early Canvass

- **Guidance is being finalized by the State Board**
 - Will be distributed to counties shortly
 - Will be effective as of April 1st
 - Changes the way absentee ballots are processed and when they can be canvassed
 - Changes timelines for data match and affidavit canvassing
 - Changes procedures for splits
 - Creates a post-election review of invalid ballots

Early Canvass



Early Canvass

➤ Main components

- Absentee ballots must be processed on a continual basis
 - Before Election Day – with 4 days of receipt
 - On or after Election Day – with 1 day of receipt
 - No more 3-day set aside
 - No Manual Canvassing until after the election
- Processed absentee ballots will be scanned on two occasions prior to Election Day
 - On the day before the first day of Early Voting
 - After the close of polls on the last day of Early Voting

Early Canvass

➤ Main components *(continued)*

- Results from scanned absentee ballots must be included in your unofficial Election Night results
- Statewide data match timeline – data will be needed from each board within 3 days after the election
- Additional audit of scanners
 - Will now need to perform a 3% audit on the scanners used for pre-Election Day scanning of absentee, in addition to the 3% audit on scanners used for post-Election Day scanning of absentee ballots

Early Canvass

➤ **Main components** *(continued)*

- Canvass of affidavit ballots – 4 business days after Election Day
- Post-Election Review of Invalid/Set-Aside Ballots – also 4 business days
- Cure procedures apply throughout
- Information needs to be updated for both absentee and affidavit ballots in online tracker

Absentee Tracker

Absentee Tracker

- The State Board will be developing an online tracker portal to provide voters with information as to the status of their absentee or affidavit ballot.
- Effective April 1st.
- Working with homegrown counties and voter registration vendors to capture the necessary information and provide it to the State.

Absentee Tracker

➤ Information to be Captured

- Whether a voter has submitted an absentee ballot request
- Whether application was approved or rejected. If rejected, also reason why
- Date ballot mailed and expected delivery date
- If ballot was returned undeliverable
- Date returned ballot received
- Whether a voter's returned ballot has a curable defect
- Whether absentee ballot was counted or rejected. If rejected, a brief statement why

- If a voter voted affidavit
- Whether a voter's affidavit ballot was counted or rejected
- Whether a voter's affidavit ballot has a curable defect

Accessible Absentee

Accessible Absentee

➤ Changes for the short-term

- For the June 28, 2022 election and elections held thereafter, oath envelopes must include tactile markers designating where the voter should sign.
- However, CBOEs are instructed to accept signatures anywhere on the envelope.

➤ Changes for the long-term

- The State Board will be working on procuring a statewide portal to be used by counties and voters needing to access an accessible absentee ballot.
- How it will work.

Voter Registration Systems

Voter Registration Systems

- **Changes Part 6217.3 of our Regulations were recently adopted**
 - Every county voter registration system must be approved by the State Board to ensure it continually meets the promulgated functional, technical and security specifications.
 - Applies immediately to all new vendors seeking approval.
 - Are reviewing existing system to ensure compliance.
 - Currently have one new vendor who has been approved, with 2 more who have reach out with interest in submitting their system for review.

Questions?