



Chautauqua County:

**Getting Results Posted
on the Internet**

First.... Fast... & Accurate

Where to Start???

- *Training at the Poll Site...*

- *R.U. Ready??*

- **Each Poll Site Coordinator is instructed to have the data disk ready to 'go' five minutes after the polls close.... Very basic closing procedures are available in the machine and in the Coordinator's bag for reference....**

"Gone in 5"



**Partner up with a group
or a non-profit organization
you can rely on.**

**Make phone calls or send
letters to cultivate interest.**

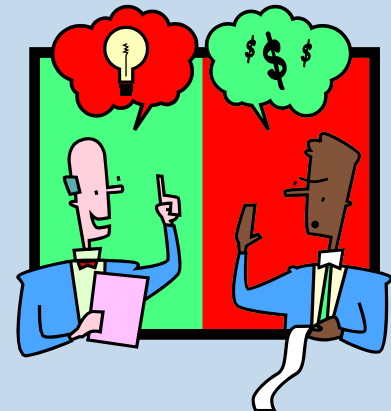
We requested quotes:

- **1) Legal Ads in the newspaper**
- **2) Our website votechautauqua.com**

Request for Proposal:

- 1) Give general terms and conditions
- 2) Spell out your basic needs
(Transport by 24 teams/54 poll sites)
- 3) Provide in-depth step by step requirements for election night.

R.F.P.



Sample of our Team # 1 – Team # 2 requirements

TEAM# 1 TWO STOPS

TEAM 1 WILL ARRIVE IN Kiantone by 8:50 and will leave by 9:05 for Frewsburg and then return two bags to Mayville

TEAM# 2 TWO STOPS

TEAM 2 WILL ARRIVE IN Lakewood by 8:50 and will leave by 9:05 for 2nd Lakewood stop and then return two bags to Mayville

RETURN BAGS TO MAVILLE, HALL CLOTHIER BUILDING

BACK TALL BUILDING...REAR PARKING LOT...WHERE DMV IS LOCATED

PHONE 753-4580

COMMISSIONERS CELLS PHONES ARE NORM GREEN @ 499-9628 AND BRIAN ABRAM @ 269-4764

TERRI DANIELS, COORDINATOR OF THE PROGRAM, CAN BE REACHED AT 679-6957



- **Meet with the organization's representatives prior to the election. Provide them with detailed maps, instructions and answer questions as necessary...Gather cell numbers for each team. We currently pay our partner a fixed sum of \$60 per team (low quote) for up to 24 teams per election. We reserve the right to modify the number of teams necessary, based on the size of the election.**

Data Disk Teams

Ready:


arrive at the poll site 8:45 PM

Set:

**announce their arrival and show
ID to the site Coordinator**

Go:

**out the door with the disk(s) in 5
minutes after the poll is closed**





WHAT IF THE DISK ISN'T READY IN "5"?

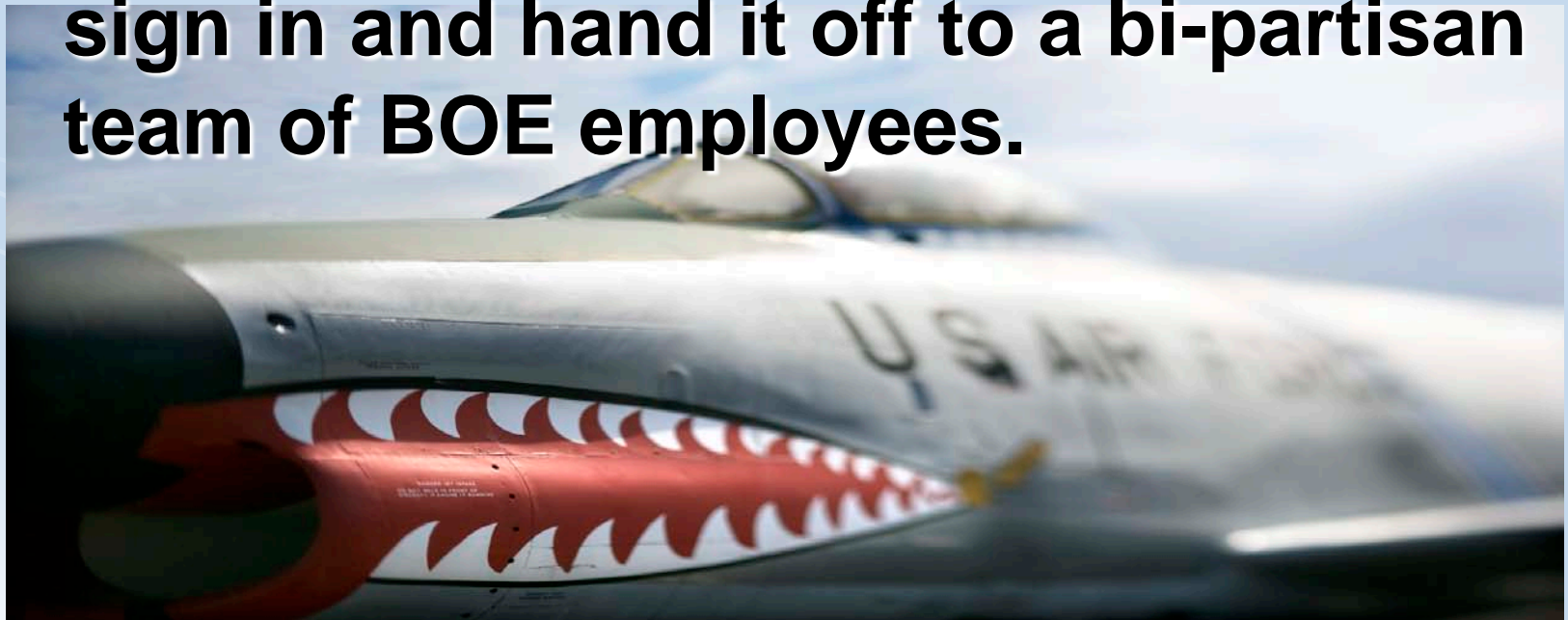
- If the team has more sites they leave by 9:15.
- If the team has only one site they stay until 9:30

Chautauqua County keeps track on election night of each team's arrival at our office. By tracking the team's delivery time, we can review how each team is doing and modify accordingly.

<u>TEAM</u>	<u>SITE Town</u>	<u>Bldg</u>	<u>Village</u>	<u># Speed bags</u>	<u>Arrival Time</u>	<u>Printed Name</u>	<u>Cell Phone #</u>	<u>Signature</u>
1	Hanover	Goodell Bldg	Irving	1	10:05	Bill & Amy Begier	753-6255	
	Hanover	Mt. Carmel Aud	Silver Creek	2				
2	Hanover	Silver Creek High School	Silver Creek	1	10:11	Jackie Daniels	785-9373	
	Hanover	Forestville Village Hall	Forestville	1				
3	Arkwright	Town Hall	Fredonia	1	9:47	Gwen & Howard Haskin	581-2261	
	Villanova	Town Hall	South Dayton	1				
	Stockton	Cassadaga Community Bldg	Cassadaga	1				
4	Dunkirk	Dunkirk Fire Hall	Dunkirk	1	10:14	Dave & Nancy Walker	753-6773	
	Sheridan	St John Bosco Church	Sheridan	2				
5	Dunkirk	St Hyacinth's Lyceum	Dunkirk	1	10:13	Adele Thomas	753-0591	

The Speed bag has landed:

Once the speed bag with the disk and results tape arrive, the disk runners sign in and hand it off to a bi-partisan team of BOE employees.



- 1. Commissioners Green and Abram break the speed bag seal and hand the disk to our EMS staff person.**
- 2. After it has been read into the RTR system, it is then up-loaded and imported into our Domain website at www.votechautauqua.com**

How fast do we get results on the Internet?

- **Currently Chautauqua County is done posting around 10:35**
- 90% of results are on line by 10:05 p.m.
- All results from our 1,000 square mile county with 27 towns, 2 cities and 124 election districts are 100% accurate when read from the data disks.

Jerry O. Eaton's twin
brother Larry O. Eaton

• wants to know

any

A close-up photograph of a man with a shocked expression. He has wide, staring eyes and a mouth that is open, showing his teeth. A white thought bubble with a black outline is positioned above his head, containing the text "QUESTIONS???". The background is dark and out of focus, showing some green foliage. The overall image has a light blue border with some lens flare effects.

QUESTIONS???