

**DOMINION
VOTING™**

Our customers come first.



**NY ECA
Winter
March 2022**

About Us

www.dominionvoting.com

ELECTION DISINFORMATION IS DANGEROUS AND THREATENS DEMOCRACY.

GET THE FACTS ABOUT DOMINION AND ITS VOTING SYSTEMS.

LEARN MORE

LEGAL UPDATES



LEARN HOW WE ARE
DEFENDING DOMINION

GET DETAILS

2021 ELECTIONS



GENERAL ELECTION
RESOURCES & INFO

LEARN MORE

LATEST NEWS



READ NOW

Updated: February 24, 2022

SETTING THE RECORD STRAIGHT: FACTS ABOUT DOMINION

Baseless claims about Dominion Voting Systems and the November 2020 election have been fully debunked by election authorities, subject matter experts, and third-party fact-checkers. Get the [Latest News](#).

ABOUT ELECTION 2020

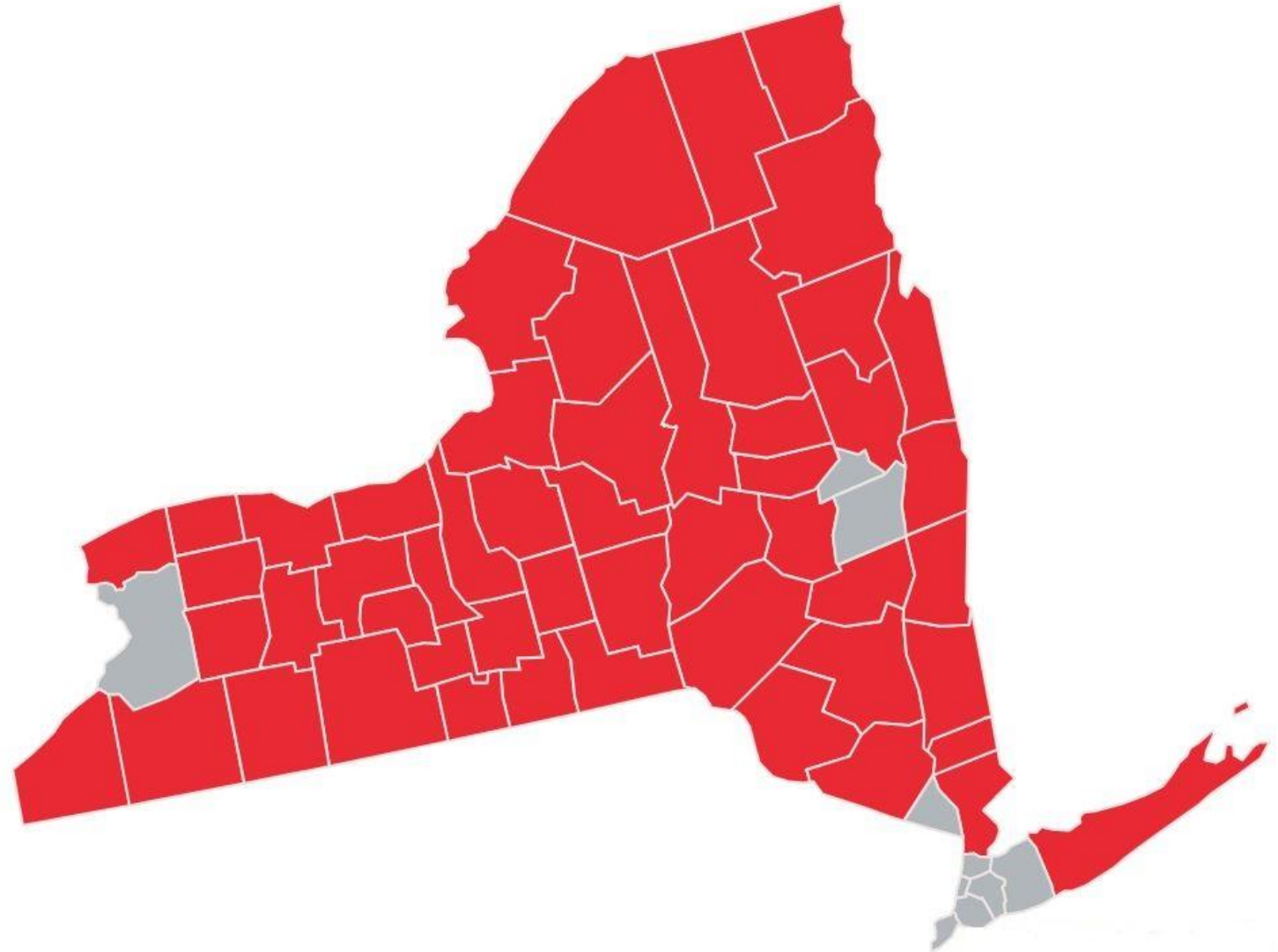
The U.S. government has confirmed through multiple reports that no vote flipping, voting machine manipulation, or foreign government interference took place in the 2020 elections.

- ✓ Election authorities and the U.S. Department of Homeland Security's Cybersecurity & Infrastructure Security Agency ("CISA") [stated](#) there "is no evidence that any voting system deleted or lost votes, changed votes, or was in any way compromised."
- ✓ The Director of National Intelligence [reported](#) in March 2021 there are "no indications that any foreign actor attempted to alter any technical aspect of the voting process."
- ✓ The FBI and the U.S. Department of Homeland Security [confirmed](#) no evidence exists that foreign governments or other actors interfered with the elections, and claims about foreign governments manipulating or owning election infrastructure used in the 2020 elections are "not credible." The U.S. Army [debunked](#) false claims about an overseas election server raid.

A MTBF National Election Security Task [force](#) [debunked](#) Dominion's claims to state how battle-ground states found no

About Us

- **52 Counties** choose Dominion Voting as their election equipment partner



About Us



New York Experienced team of professionals
We are more than a vendor - we are your partner

Our dedicated NY Team (since 2008):

- Dawn Strother, Customer Success Manager
- Michelle Hogancamp, Product Support Specialist
- Mike Nicholas, Product Support Specialist
- Gio Costantiello, Regional Sales Manager



6 OFFICES

Spread across four time zones in North America



250+ EMPLOYEES

Working alongside our customers



1,200+ CUSTOMERS

Using Dominion technology



100,000+ TABULATORS

Deployed globally for use in various elections.

Contact Us



Handling all your needs

- EMS Support: Dawn (dawn.Strother@dominionvoting.com) or nyems@dominionvoting.com
- Training and Support: Dawn
- Test Decks: Dawn
- Parts and Consumables: Dawn
- Machine Technical Support: Michelle (michelle.Hogancamp@dominionvoting.com), Mike (mike.nicholas@dominionvoting.com)
- Repair scheduling: Michelle or online at nyrma@dominionvoting.com
- Demos, Sales, and Extended Warranties: Gio (gio.costantiello@dominionvoting.com)



6 OFFICES

Spread across four time zones in North America



250+ EMPLOYEES

Working alongside our customers



1,200+ CUSTOMERS

Using Dominion technology



100,000+ TABULATORS

Deployed globally for use in various elections.

Preventing Paper Jams

Ballot Curling

- Ballots curling after being printed from on demand ballot printers due to:
 - Print temperature
 - Printer settings
 - Paper weight

Solution: Check printer settings and perform preventative maintenance; let ballots rest and flatten before scanning

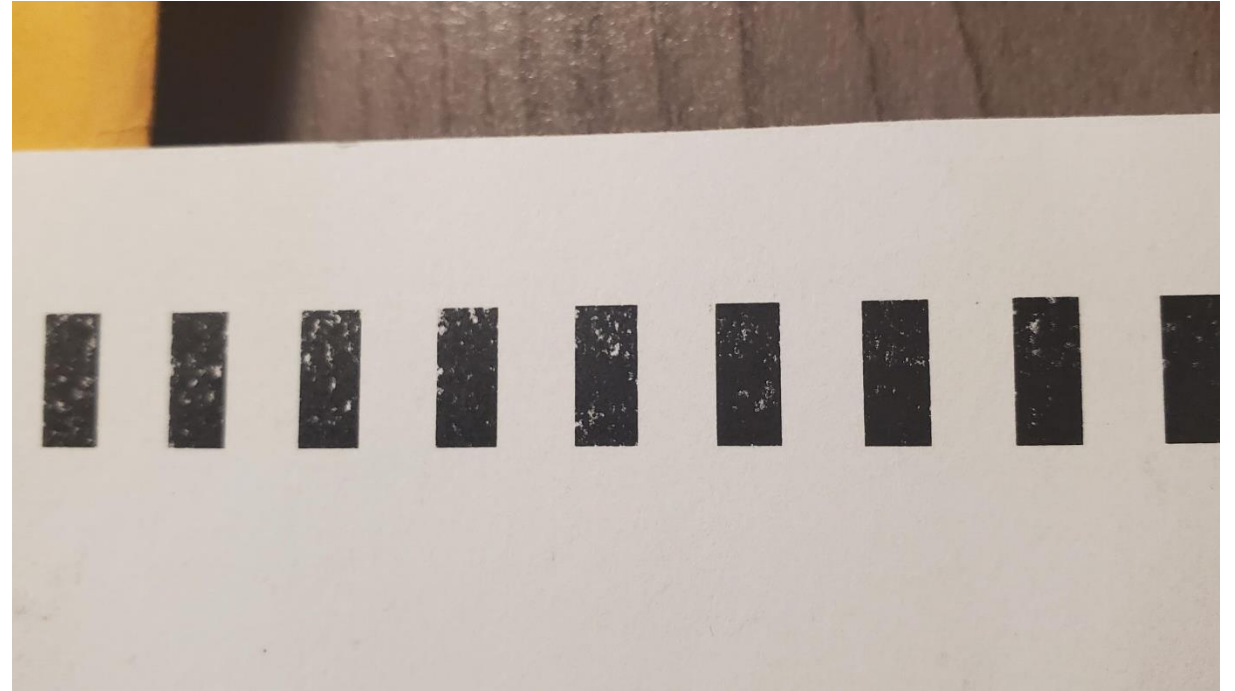
Preventing Paper Jams

Printing Issues

- Flaking Ink
- Ink NOT adhering
- Dithering in timing marks

Ink deposits in the scanner may lead to misreads and/or slippage causing jams (typically during reversal or exit)

POSSIBLE CAUSES: Incorrect printer settings; incorrect print temperature; preventative maintenance may be required; incorrect paper; incorrect ballot markers



Approved Ballot Markers

2 Marking Pens **qualified**:

- Sharpie Fine Point Black (part #: 30001 SKU: 071641300019). The ink is alcohol-based, not water, so it dries the fastest with the lowest smudge risk. This pen has slightly more bleed through than the Paper Mate pen if held in contact with the surface of the paper for extended periods.
- Paper Mate Flair M Medium Point Black, (part #: 8430152, SKU: 041540843016). This pen has minimal to no bleed through. The ink is water-based, so it will dry more slowly than the Sharpie pen, especially in humid conditions. Humidity increases the vapor pressure in the atmosphere which slows down the rate of evaporation.

Scanner Cleaning Sheets

Reminder: Please use **Distilled water** and **NOT alcohol!**

Alcohol will dry out the rollers in the scanner and eventually cause damage and slippage leading to paper jams

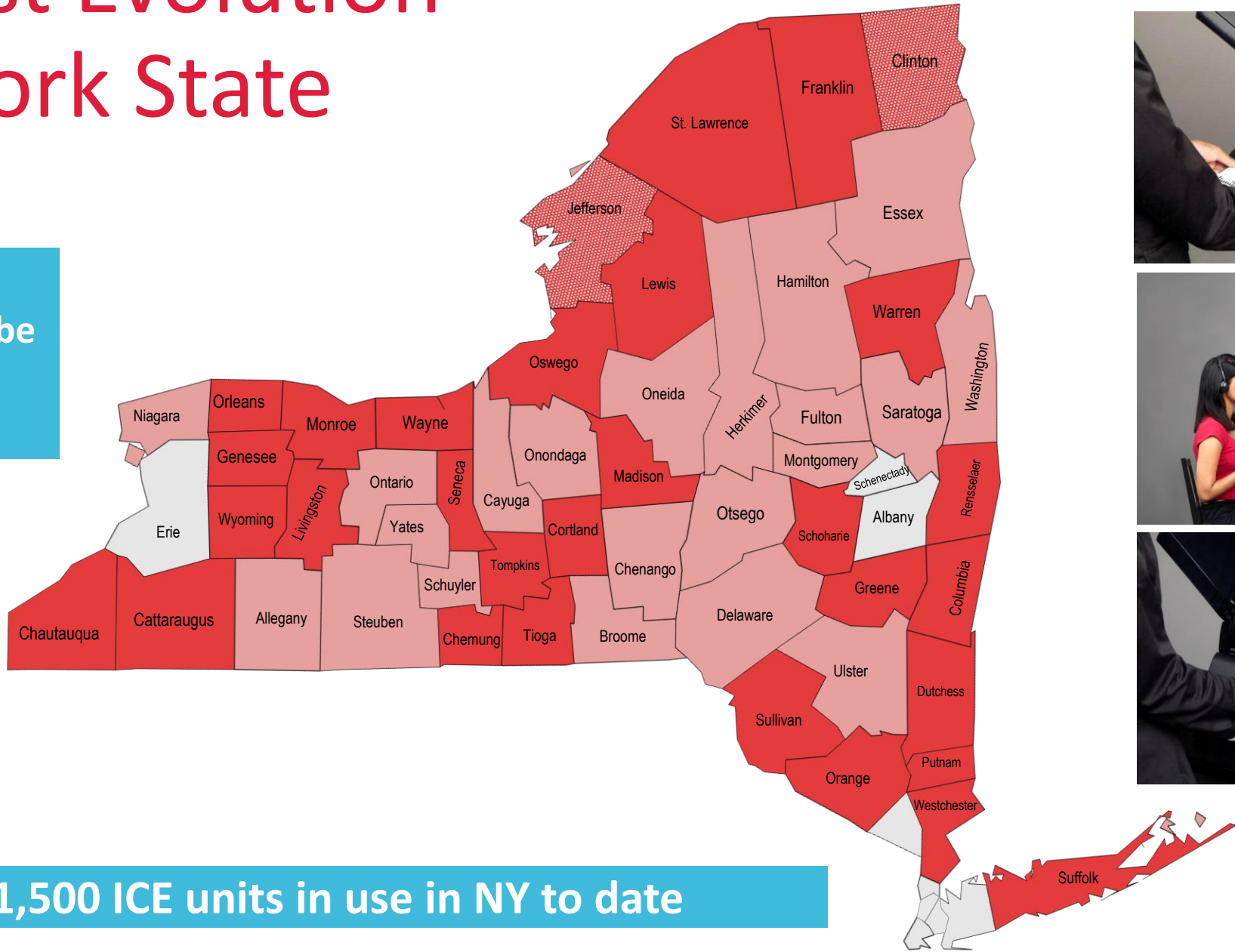
ImageCast Evolution

- All-in-one unit, easy to setup and power on
- Programmed from current EMS
- BMD separate from ballot box
- Integrated plastic folding privacy panels
- No ADA table, no additional mother board, etc.
- No UPS - backup battery is inside the unit
- Only one black ink cartridge required
- Marks a regular pre-printed ballot – same ballot for all voters
- Fastest scanner available – 5s per ballot!
- **No limit to the # of ballot styles – great for early voting!**
- **Lease, purchase and financing options available**
- **We can take your old machines with a purchase**



ImageCast Evolution In New York State

- **32 Counties will be using ICE in 2022**



More than 1,500 ICE units in use in NY to date



ImageCast Central

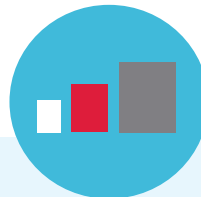
- Efficient, scalable and economical
- Programmed from the same EMS software – no duplicate programming
- Uses Commercial Off-The-Shelf (COTS) hardware - decreases capital costs and minimizes hardware risks
- Ability to consolidate ballot styles to reduce printing
- Adjudication option will be available in the new version
- Scans up to 2,400 ballots per hour (based on 17" folded ballots)



Scalable and flexible
to meet jurisdictional
needs



Cost-effective commercial-
off-the-shelf solution



Different capacity
hardware for large,
medium and small
counties



Easy to operate!
Simply scan and
accept batch



Easy to program out
of the same
database as other
tabulators

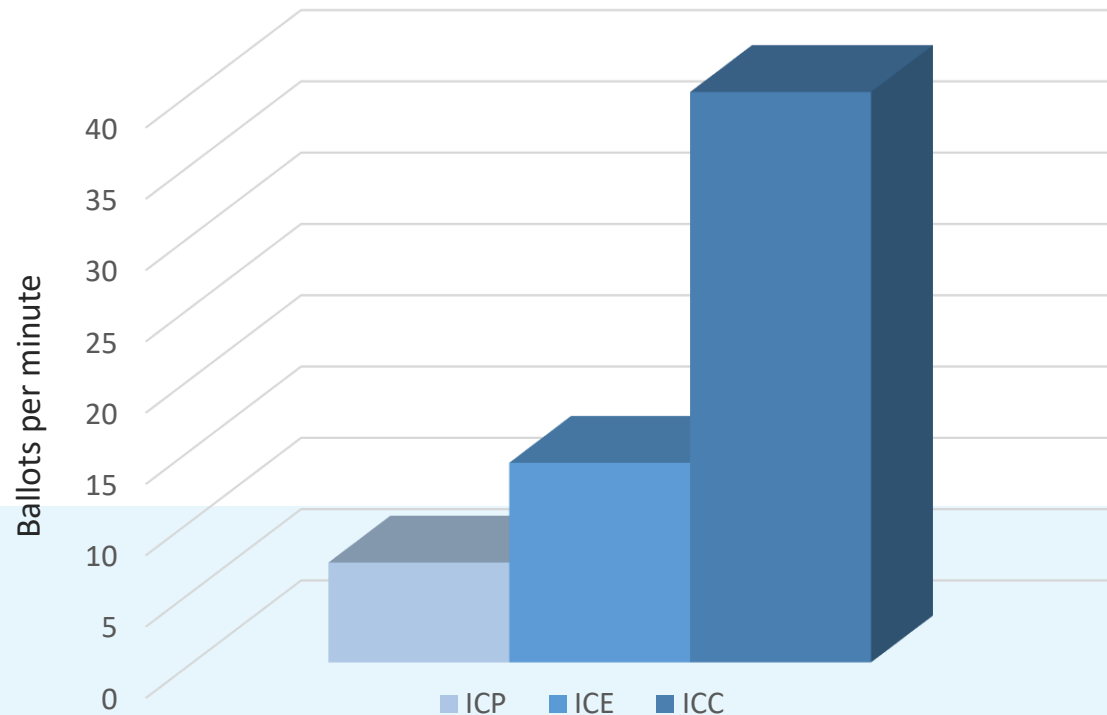
Vote by Mail and Absentee Voting

Ballot scan speeds based on a typical 17" NY ballot:

ICP: 4-5 ballots/min

ICE: 10-12 ballots/min (**more than 2x faster than an ICP**)

ICC: 35-40 ballots/min (**more than 8x faster than an ICP**)



**Programmed out of
EED!**

Coming Soon

- Democracy Suite 5.16 – Submitted!
 - Upgrade to EMS
 - Upgrade to ICE Firmware
 - Upgrade to ICC Firmware
 - Upgrade to current ICP (scanner) firmware
 - Introduction of the ImageCast X BMD
 - Introduction of digital online adjudication
 - Introduction of the ICP2



ImageCast X Ballot Marking Device



- The smartest pen
- Simple:
 - Voter marks their ballot on the **touchscreen**
 - Once selections are confirmed, the system **prints a full faced standard paper ballot** with their vote selections
 - Voter casts their ballot on **ANY** ImageCast tabulator
- Prints ballots up to 22" double sided
- **Fully accessible** - audio-playback functionality for voters with disabilities



Large 21"
touchscreen with
integrated battery
back-up



Leverages commercially
available hardware -
versatile and flexible



Lightweight and
compact - will require
less storage space

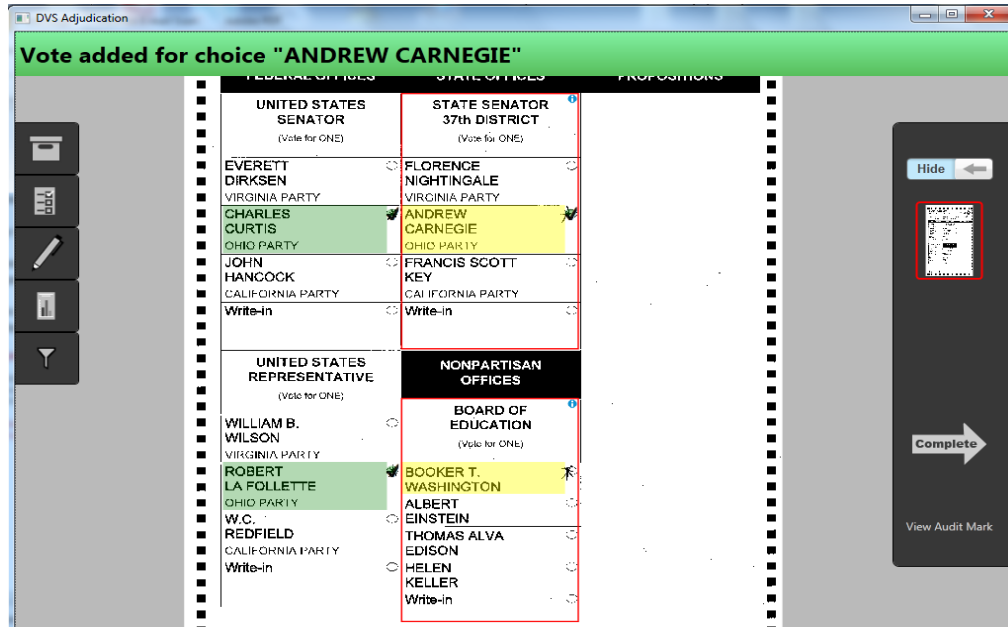


Easy to set up and
operate by poll
workers



Easily maintained
with or without
vendor support

Digital Online Adjudication



Real-time efficient
digital review of
ballots with
conditions



Transparent audit trail
keeps track of every
adjudication decision



Save time and resources
- no need to duplicate
and re-scan ballots



Intuitive for users of
all ages and skill level



Fully integrated
system for seamless
results

Service and Support

- Dominion's project team has a proven track record. We've been there since day 1 supporting you through all your needs
- Dominion has **more than 15** in state resources to support you
- At Dominion, our customers come first. We are dedicated to ensuring smooth elections and your success



Implementation
support



Training



Election
support



Ongoing service
& support



Partnership

Frequently Asked Questions



EMS 4.9 - NEW YORK – January 2021

FREQUENTLY ASKED SOFTWARE QUESTIONS

QUESTION: DURING EARLY VOTING IN THE 2020 GENERAL ELECTION THE BMD AND ICP VOTING MACHINES WERE REACHING A LIMIT OF 2,500 VOTERS PER MACHINE. CAN THIS LIMIT BE INCREASED?

SOLUTION: Yes, there is a parameter in the DCF (Data Configuration File) called "Max Ballots accepted". Dominion has recommended changing this value on the Early Voting configuration to 4,000. This parameter can be changed by doing the following:

1. Login to EED as Techadvisor
2. In EED with the project open and Status at Election Project Definition, Election Project Styling or Ballots Generated – Select Tabulation then Select Configuration.
3. In Configuration change the Tabulator Type to CF200, ImageCast Precinct, ImageCast Central and SEARCH.
4. For each "Early Voting" Machine Type (ICP or BMD) – Select the machine type and Select the Device Configuration Data tab.
5. Expand the + (plus sign) in front of the machine type.
6. Expand the + (plus sign) in front of "DCF_INTEGERS.DVD".
7. Locate the parameter "Max Ballots accepted" and change the Value to 4000..
8. Select SAVE and CLOSE.

QUESTION: DUE TO THE RECENT CHANGES FROM THE NEW VOTER FRIENDLY ACT WHEN A CONTEST HAS MULTIPLE PARTY ENDORSEMENTS, THE AUDIO PRESENTED TO THE VOTER WILL READ THE CANDIDATE NAMES CONSECUTIVELY AND NOT IN PARTY LINE ORDER AND NO PARTY ANNOUNCED. WHAT IS THE RESOLUTION?

FOR EXAMPLE:

IF THE BALLOT READS:

Row 1 Democratic Smith 1/Doe 1
Row 2 Republican Smith 2/Doe 2
Row 3 Conservative Smith 2/Doe 2
Row 4 Working Family Smith 1/Doe 1
Row 5 Green Smith 3/Dow 3

THE AUDIO WILL READ:

Row 1 Smith 1/Doe 1
Row 4 Smith 1/Doe 2
Row 2 Smith 2/Doe 2
Row 3 Smith 2/Doe 2
Row 5 Smith 3/Doe 3

SOLUTION: The following steps will present the audio in the correct ballot order and with the party announced:

1. On the Server navigate to the NAS > project folder – Rename the "Ballots" folder to "Ballots1"
2. In EED, roll the project back to Election Project Styling
3. In Settings > Ballot Style > Settings Tab > Named Augments, change the Cell Reference Template from blank or "R" to "R%" – click Apply and OK
4. Select Actions > Ballots > Create Ballots
5. While the Project is in "Ballots Generated," on the Server go to the NAS > project folder – Delete the folder "Ballots" – Rename the "Ballots1" folder to "Ballots."
6. In EED, apply any blank candidate WAV files (No Candidate.wav)
7. Select Actions > Create Election Files
8. Reprogram the Smart Cards and Security Keys (iButtons)

QUESTION: IN MOVING FROM ELECTION PROJECT DEFINITION TO ELECTION PROJECT STYLING I SOMETIMES GET NO BALLOTS GENERATED. WHAT IS THE PRIMARY CAUSE FOR THIS HAPPENING?

SOLUTION: The common reason for this occurring is if some or all contests are defined in more than one Elector Group. Check all Elector Groups and make sure each contest exists in only one Elector Group.



QUESTION: WE USED CEPSTRAL SWIFTALKER TO CHANGE A CANDIDATE NAME. THE NAME IS CORRECT ON THE BMD BUT NO SOUND IS HEARD ON THE ICE. HOW CAN WE GENERATE THE SWIFTALKER FILES TO WORK ON THE ICE VOTING MACHINE?

SOLUTION: The ICE expects the WAV files to be recorded in Mono sound rather than Stereo. The BMD can support either Mono or Stereo. When Exporting Audio File from Swiftalker please use the following "Save as Type": **WAV (16 bit, 11kHz, Mono).**

QUESTION: AFTER PERFORMING THE DCF AND MBS UPGRADE PRIOR TO THE 2019 GENERAL ELECTION WE ARE NO LONGER GETTING THE BALLOT ID OR ED REPORT ON THE RESULT TAPE AT POLLS CLOSE. CAN WE STILL GET THAT REPORT?

SOLUTION: Yes, those options are available to be activated in the DCF (ICP or BMD) or MBS (ICE) files. The following should be done:

FOR BMD or ICP

1. Login to EED as Techadvisor
2. In EED with the project open and Status at Election Project Definition, Election Project Styling or Ballots Generated – Select Tabulation then Select Configuration.
3. In Configuration change the Tabulator Type to CF200, ImageCast Precinct, ImageCast Central and SEARCH.
4. For each "Election Day" Machine Type (ICP or BMD) – Select the machine type and Select the Device Configuration Data tab.
5. Expand the + (plus sign) in front of the machine type.
6. Expand the + (plus sign) in front of "DCF_OPTIONS.DVD".
7. Expand the + (plus sign) in front of "Results tape printout options".
8. Locate the parameter "Results shown by Precinct (ED) or "Results shown per ballot ID" and change the Value from 0 to 1. (Only choose one of those two parameters to change).
9. Select SAVE and CLOSE.

FOR ICE

1. Login to EED as Techadvisor
2. In EED with the project open and Status at Election Project Definition, Election Project Styling or Ballots Generated – Select Tabulation then Select Configuration.
3. In Configuration set the Tabulator Type to ImageCast Evolution and SEARCH.
4. For the "Election Day" Machine Type (ICE) – Select the machine type and Select the Device Configuration Data tab.
5. Expand the + (plus sign) in front of "root".
6. Expand the + (plus sign) in front of "Thermal Printer".
7. Locate the parameter "Results tape template" and change the Value from 1 to 2
8. Locate the parameter "Results view template" and change the Value from 1 to 2.
9. Select SAVE and CLOSE

QUESTION: WE ARE INSTALLING ICE MACHINES IN OUR COUNTY. WHAT ARE THE CHANGES IN CODING THE ELECTION IN EED?

SOLUTION: The following should be done:

1. Obtain from the New York State Board of Elections the MBS Configuration File and any ICE related files. Install the MBS Configuration File and ICE related files on the NAS in the COMMON folder. (Follow the NY SBOE Instructions to Install).
2. Import the MBS File to the current election project.
 - a. Login to EED as Techadvisor
 - b. Select Election Project tab – Select Import – Select Device Configuration.
 - c. Select MBS – Select YES and OK when Import Complete.
3. In EED – Select the Settings tab – Select Project Parameters – Select Audio tab – Under Tabulator Support – **Check the box for ICE.**
4. In Tabulation – Tabulators – Create new ICE tabulators.
 - a. Tabulator Type = ImageCast Evolution
 - b. Device Settings = "Election Day – ICE" or "Early Voting – ICE".



QUESTION: IN EED WHEN SELECTING "ACTIONS – BALLOTS – DEFINE BALLOT STRUCTURE" AN ERROR MESSAGE STATING "FAILURE TO VALIDATE" OCCURS. ALL THE DATA APPEARS TO BE CORRECT. IS THERE A SOLUTION?

SOLUTION: This error usually occurs when EED detect a problem in defining the ballots from the data that the user has entered. One of the reasons EED would "Fail to Validate" is if the ballots would exceed the valid sizes defined in "Setting – Ballot Style – Settings – NY State Ballot Styles (14", 17" or 22)". However, if all the data is correct and systems still produced the error, the server may need to be rebooted. The user should perform a full SHUTDOWN on the server and all workstations. Leave the equipment powered off for about 10 minutes. Power the server on first and wait until the server is at the screen "Press CTL – ALT – DELETE" before powering on the workstations. If the message still occurs there is a mistake in the coding of the project.

QUESTION: IN THE ICE CONFIGURATION FILE (MBS) HOW CAN I SET THE PARAMETERS TO INCLUDE OVERVOTES AND UNDERVOTES ON MY MACHINE RESULTS TAPE?

SOLUTION: Perform the following steps:

1. Login to EED as Techadvisor
2. In EED with the project open and Status at Election Project Definition, Election Project Styling or Ballots Generated – Select Tabulation then Select Configuration.
3. In Configuration set the Tabulator Type to ImageCast Evolution and SEARCH.
4. For the "Election Day" Machine Type (ICE) – Select the machine type and Select the Device Configuration Data tab.
5. Expand the + (plus sign) in front of "root".
6. Expand the + (plus sign) in front of "Thermal Printer".
7. Locate the parameter "Show Overvotes on the Reports" and change the Selection using the drop-down from Hide on the Reports to Show on the Reports.
8. Locate the parameter "Show Undervotes on the Reports" and change the Selection using the drop-down from Hide on the Reports to Show on the Reports.
9. Select SAVE and CLOSE

QUESTION: WHAT DOMINION RECOMMEND FOR AN ORDERLY BACKUP OF PRIOR ELECTION PROJECTS?

SOLUTION: The following are the steps for backing up and saving your previous election projects. This also will include the RTR election night results that have been loaded into the project.

1. Create a folder on the workstation C:\Drive called "EMS Backups"
2. Within the folder "EMS Backups" create folders for each previous year. Call the folders "2021 Backups", "2020 Backups", "2019 Backups", ...
3. Within each election year folder create folders called "Village Election", "School Election", "Primary Election" and "General Election".
4. In Election Event Designer (EED) with the project opened go to the tab "Election Project" and select "Create Backup".
5. In "Create Backup" choose the default – "Create an election project package consisting of a complete set of associated election project files from the EMS NAS server within the election project package".
6. Once the backup is finished go to the tab "Actions" and select "Open Document Management".
7. In "Open Document Management" on the left side Target use the drop-down and select "EMS NAS". On the right side Target navigate to the C:\Drive, then to the folder "EMS Backups", then to the correct election year folder ("2021 Backups", "2020 Backups", ...) and finally to the appropriate election folder ("Village Election", "School Election", "Primary Election" or "General Election").
8. On the left side go into the "Project Package" folder and select both files (.zip and .sha). Copy the files from the left side to the right side of the "Open Document Management" window.
9. Exit "Open Document Management" and close the EED project.
10. Repeat steps 4 through 9 for all election projects to be preserved.
11. Once all election backups are preserved on the workstation C:\Drive:
 - a. To CD – Copy the contents of each year folder ("2021 Backups", "2020 Backups", ...) to a separate CD
 - b. To USB Drive – Copy the folder "EMS Backups" to the root level of the USB Drive.

Questions and Answers



Thank you all for your Support!

DOMINION
VOTING™

Our customers come first.

